



roznik_hill
acousticcommons.net/streams/

Poslušaj: Listen:

Prenos v živo iz ljubljanskega mesta naga gozda prernaša zvok krajinskega parka z mestnim hrupom ter glasovi bližnjih človeških in nečloveških vrst. Odprti mikrofoni so postavljeni pod krošnjami čudovitih bukev in smrek na pobočju hriba Rožnik, vodnega zajema ob stavbi Jožeta Plečnika. Ko smo postavljali opremo nas je obiskal srnjaki! Družine jelenov, različni majhni glodavci, veverice in kar 68 različnih vrst ptic so tipični prebivalci tega mestnega gozda.

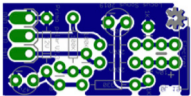
Lokacija mikrotona je nedaleč od galerije Steklenik, ki se nahaja v prostorih Rastlinjaka Tivoli, kjer Cona pripravlja razstave in predtve, posvečene zvočnim in bioakustičnim umetniškim delom in instalacijam. Odprti mikrofoni tako deluje kot nekakšen razširjen dislocirani zvočni senzor galerije.

Prostran krajinski park obsega mestni park Tivoli in gozdne površine bližnjih hribov in gričev. Za primerjavo, newyorški Central Park meri 341 ha, londonski Hyde Park 140 ha, območje krajinskega parka Tivoli, Rožnik na Šišenskem hribu pa obsega kar 460 ha. Hkrati pa ima Ljubljana tridesetkrat manj prebivalcev kot London.

Postlušaj: Listen: acousticcommons.net/streams/roznik_hill

A live stream from an urban forest in Ljubljana relays a distant city ambience with human and non-human sounds closer up. The open microphone is placed under a canopy of beeches and spruces on the slope of the Rožnik hill, close to the water pumping station by Jože Plečnik. As we were setting up the equipment, a roe deer came to visit us. Deer families, various small rodents, squirrels and as many as 68 bird species are found here. The microphone acts as an extension of the Steklenik gallery, in the nearby Tivoli greenhouse, where Cona produce exhibitions, installations and events dedicated to sound and bioacoustic art.

The spacious landscaped area encompasses 460 hectares of the Tivoli City Park and forested hills nearby. It was designed in 1813 by the French engineer Jean Blanchard and created by joining together the parks which had surrounded Podturn and Cekin Mansions. In the 19th century, the hilly part of the park was entirely covered with forest. Step by step, the area has become firmly lodged in the consciousness of the city's inhabitants as an open space for relaxation and recreation.



Več informacij: More info:

acousticcommons.net/files/ljubljana.pdf

Odliomek iz ocenjevalnega sestanka na avtopartnerjev mreže Akustično skupno, oktober 2021. V:) acoustic commons (Knjižica 4.

Excerpt from evaluation session on the bus partner network Akustično skupno, October 2021. V:) acoustic commons (Booklet 4.

from Ljubljana to Kočevski Rog. Acoustic Commons Partner Meeting #2 October 2021.

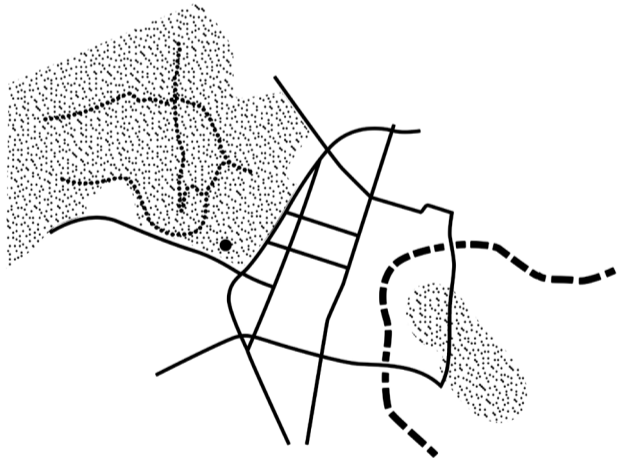
— Ida Hirsenteider

[What makes [Cona] unique in the Slovenian sound art and music composition scene is the deep relationship it nurtures to the sites of listening and the way the body moves or does not move in time and space when listening. The location of the ecological conditions of a place but also gives the place a sort of agency that is able to present its own case as a political and social entity. Cona in English means Zone. A zone for me is an open space without a defined border or centre.

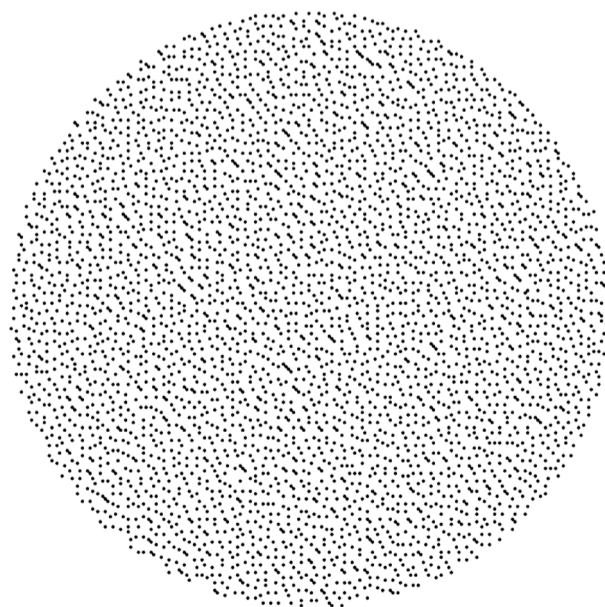
kar daje Coni posebno mesto na slovenski sceni zvočne umetnosti, je globoka in prista povezavnost z lokacijami poslušanja in način gibanja ali ne-gibanja teles v času in prostoru. Lokacija zvoka ne predstavlja zgolj ekoloških razmer kraja, temveč mu daje tudi neke vrste opolnomočenje in zmožnost predstavljanja kot politične in družbene entitete. Cona v angleščini pomeni zone. Sama dojemam cono kot odprt prostor, ki nima opredeljenih meja ali središča.

Rožnik Odprti mikrofoni

Rožnik hill Open microphone



+46.053420°
+14.490735°



Cona je v aprilu 2021 postavila svoj prvi odprti mikrofoni v sodelovanju s Krajinskim parkom Tivoli, Rožnik in Šišenski hrib in podjetjem VOKA-SNAGA Javni holding Ljubljana. Postavitvev je del širšega, mednarodnega projekta, ki poteka pod okriljem mreže Akustično skupno. Točka zajema zvoka Rožnik je del mreže odprtih mikrofoni po Evropi in na Japonskem, za projekt Kreativne Evrope, Akustično skupno. Poleg Cone so partnerji še: Locus Sonus (Aix-Marseille), Full of Noises (Barrow-in-Furness), Hellenic Mediterranean University (Kreta), Cyberforest (Tokio) in Soundcamp (London).

In April 2021, Cona set up its first open microphone in cooperation with Tivoli, Rožnik and Šišenski Hrib Landscape Park and VOKA-SNAGA Public Holdings, Ljubljana. The Rožnik Hill listening point is part of a network of open microphones in Europe and Japan for the Creative Europe project Acoustic Commons. The Acoustic Commons partners are: Locus Sonus (Aix-Marseille), Full of Noises (Barrow-in-Furness), Cona (Slovenia), Hellenic Mediterranean University (Crete), Cyberforest (Tokyo) and Soundcamp (London).

Za podrobnosti: For details:

acousticcommons.net



